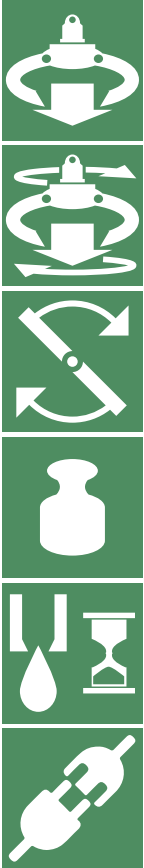




STATIC LOAD  
DYNAMIC LOAD  
TORQUE at 25MPa  
WEIGHT  
OILFLOW  
COMPATIBILITY



**100**  
kN

**50**  
kN

**2800**  
Nm

**64**  
kg

**30**  
l/min



FHL02



DOUBLE BEARING

OPPOSITE HOSE CONNECTION



Rotator frame L80  $\phi$ 35  
suitable for Formiko  
FHL02 links

Grapple close  
G1/2" Max 300 bar

Rotate left/right  
G1/2" Max 250 bar

Grapple open  
G1/2" Max 250 bar

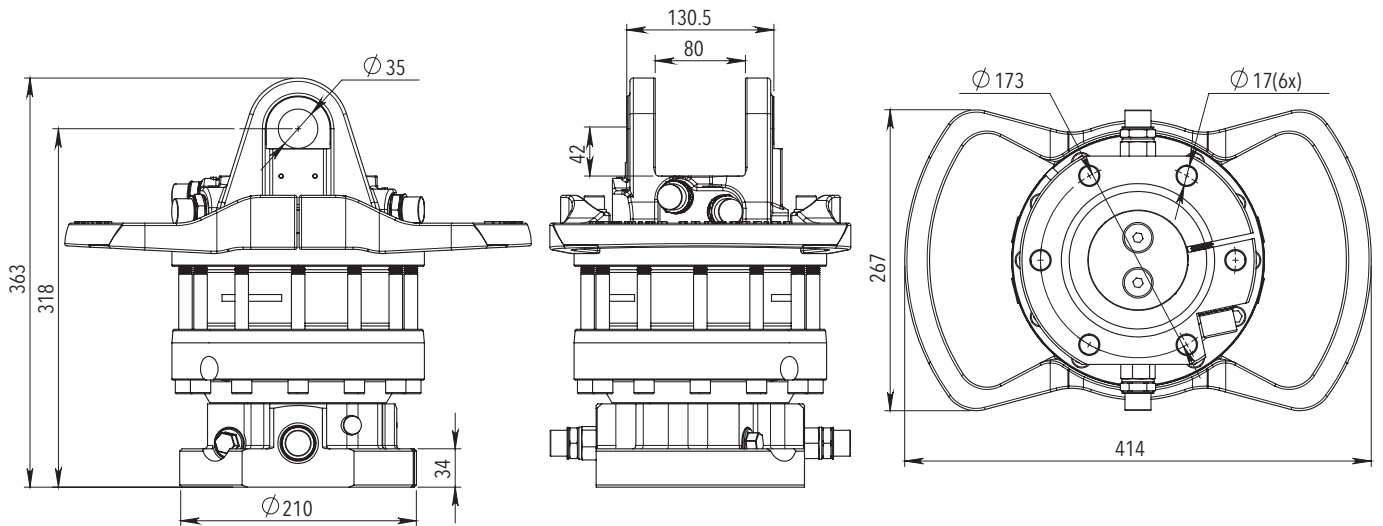
Rotator designed for  
intensive professional  
use and extended long  
lifetime

Robust and shock resistant  
steel flange for fitting the  
grapple in standard  
pattern with 6xM16 bolts

Grapple close  
G1/2"

Grapple open  
G1/2"

Optional open/close channels



For additional information relating to price levels and technical data, please contact [sales@formiko.lv](mailto:sales@formiko.lv)

Formiko Hydraulics Ltd  
Dzirciema Str. 119 k-1  
Riga LV1055  
LATVIA

+371 294 49 552  
+371 264 59 383  
[sales@formiko.lv](mailto:sales@formiko.lv)  
[www.formiko.lv](http://www.formiko.lv)

Formiko Hydraulics FHR 10 rotators are designed for heavy forestry and general cargo handling to meet high demands for reliability.



FORESTRY



AGRICULTURE



CONSTRUCTION



GENERAL CARGO



RECYCLING

